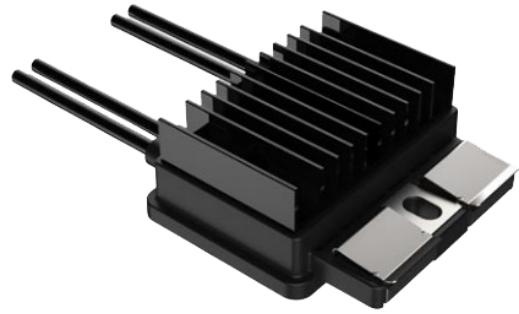




# SA 0-900



## Spec Sheet

## RSD With Optimization

Mechanical	
Dimensions (H x W x D) - With No Cable	Max 112 x 118 x 35mm
Weight	TBD (<700g)
Operating Ambient Temperature Range	-40° C to +85° C
Cable Length	Input 0.12m   Output 1m
Cable & Connector	12AWG   Staubli MC4
Enclosure Rating	NEMA Type 6P/IP68

Electrical	
Total Input Voltage	18V to 100V
Total Output Voltage	18Voc to 100Voc
Max Current	14A
Maximum Power	900W
Maximum Power Consumption	0.8W

Features & Compliance	
Communication	PLC
Safety Compliance	NEC 2017 (690.12) NEC 2020 (690.12)
EMC Compliance	UL 1741 CSA C22.2 No. 107.1
Others	FCC Part15 Class B IEC61000-6-2 IEC610000-6-3 SunSpec™ RSD Certified Over Temperature Protection
Power Optimization	Yes (MPPT)